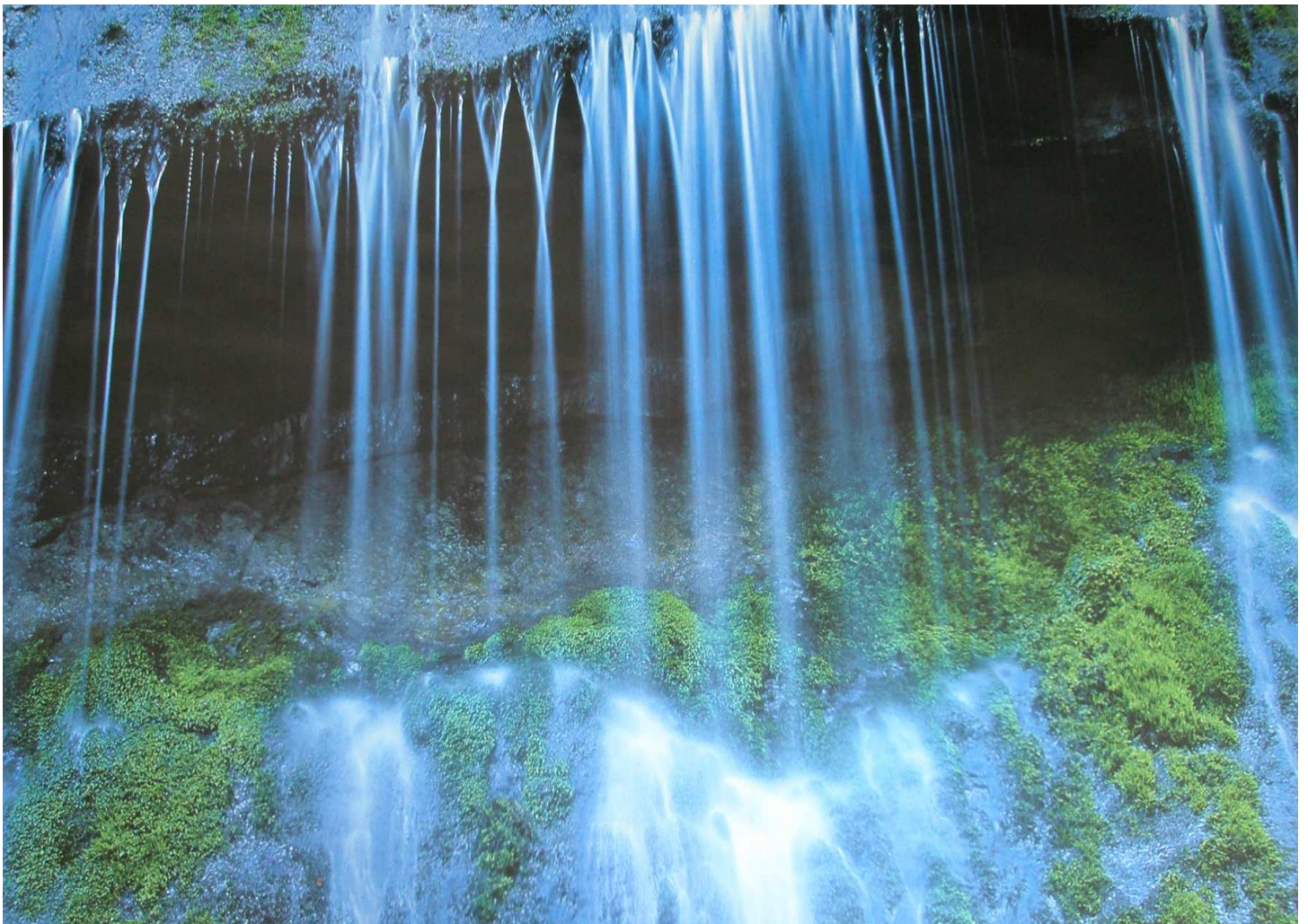


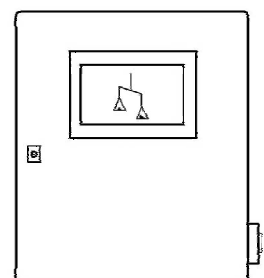
# Three-Tec

## Gravimetric Systems

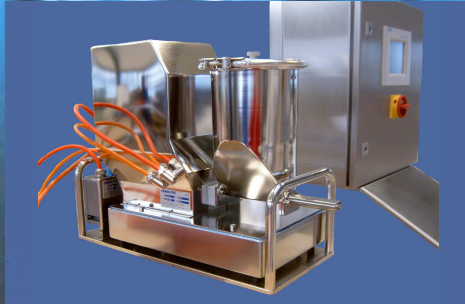
We have solutions for gravimetric Loss in weight & Batch feeders



**Three-Tec GmbH • Industrie Birren 20 • CH-5703 Seon**  
**Phone: +41 (0) 62 892 82 11 • Fax: +41 (0) 62 892 82 13**  
**E-Mail: [info@three-tec.ch](mailto:info@three-tec.ch) • Net: [www.three-tec.ch](http://www.three-tec.ch)**



## Controls & Scales



### Gravimetric Feeders

For the gravimetric low rate dosing of well- or poor-flowing powders or granulates, single or double screw feeders are applied. Depending on requirements the material flow can be continuous (Loss in weight) or discontinuous (Batch) with a high precision.



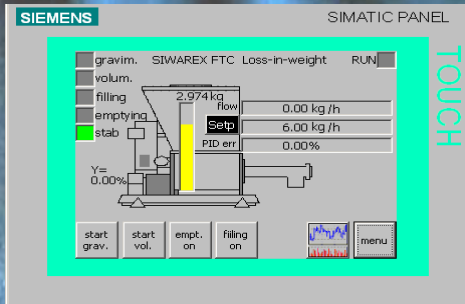
### TT/S control

The TT/S control is based on Siemens standard components

- SIMATIC S7 PLC
- SIWAREX FTA or FTC electronic scale
- TP/OP HMI panel

### PFWS Platform scales

Platform scales with standard Siemens load cells - scale up to 300 kg. For a higher resolution digital scales from Mettler-Toledo or PESA in connection with SIWAREX are available.



### Communication

#### MPI

MPI-Bus max. extension without repeater 50m

#### CPU 31x C

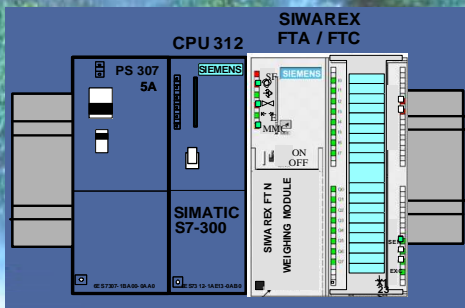
CPU with Profibus-DP or Profibus interface and/or integrated periphery are available (digital I/O, analog I/O)



#### Frequency Converter



Set point selectable  
Discharge continuous or batched



Single Point  
Nom. Load up to 300 kg

Measured value load cell